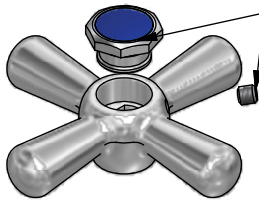


**HANDLE & BUTTON - Cross**

<b>PACKED IN PAIRS</b>	HOT & COLD	<b>ECHB</b>
	WARM & COLD	<b>ECHBW</b>
<b>SINGLE HANDLE</b>	COLD	<b>ECHB1C</b>
	HOT	<b>ECHB1H</b>
	WARM	<b>ECHB1W</b>

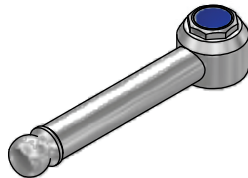
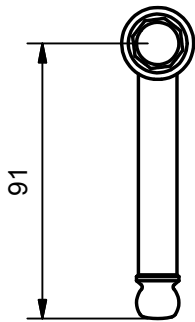


GRUB SCREW LOCATES IN GROOVED BUTTON TO PREVENT REMOVAL OF BUTTON AND HANDLE

**HANDLE & BUTTON - Cross Tamper Resistant**

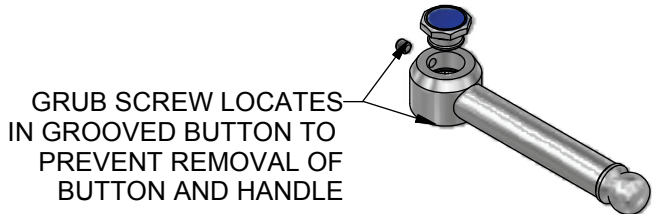
<b>PACKED IN PAIRS</b>	HOT & COLD	<b>ECVHB</b>
	WARM & COLD	<b>ECVHBW</b>
<b>SINGLE HANDLE</b>	COLD	<b>ECVHB1C</b>
	HOT	<b>ECVHB1H</b>
	WARM	<b>ECVHB1W</b>

2mm Allen Key required to remove handle (supplied)



**HANDLE & BUTTON - QHC Lever**

<b>PACKED IN PAIRS</b>	HOT & COLD	<b>ECLHBHC</b>
	WARM & COLD	<b>ECLHBHCW</b>
<b>SINGLE HANDLE</b>	COLD	<b>ECLHBHC1C</b>
	HOT	<b>ECLHBHC1H</b>
	WARM	<b>ECLHBHC1W</b>

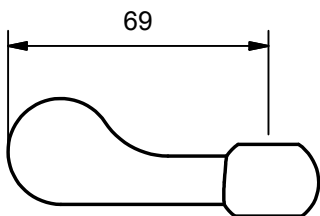


GRUB SCREW LOCATES IN GROOVED BUTTON TO PREVENT REMOVAL OF BUTTON AND HANDLE

**HANDLE & BUTTON - QHC Lever Tamper Resistant**

<b>PACKED IN PAIRS</b>	HOT & COLD	<b>ECVLHBHC</b>
	WARM & COLD	<b>ECVLHBHCW</b>
<b>SINGLE HANDLE</b>	COLD	<b>ECVLHBHC1C</b>
	HOT	<b>ECVLHBHC1H</b>
	WARM	<b>ECVLHBHC1W</b>

2mm Allen Key required to remove handle (supplied)



**HANDLE - Flared Lever**

<b>PACKED IN PAIRS</b>	<b>ECFLHB</b>
------------------------	---------------

PLEASE NOTE: Colour Coding for Easy Clean Buttons COLD (blue) HOT (red) & WARM (yellow)



**RAMTAPS PTY. LTD.**  
556 Curtin Ave. East. Eagle Farm 4009.  
Ph. (07) 3633 6000. Fax (07) 3633 6050.

*Title*

**EASY CLEAN HANDLE RANGE**

*Code:*

**ECH**

*Edition*

**01**

*Date of Issue:*

**12/10/2011**

As part of Ramtaps commitment to quality products, Ramtaps reserves the right to alter the design or specification of it's products without notice.

© 2009 All dimensions in mm. This drawing remains the property of Ramtaps and should not be copied or distributed without Ramtaps consent.